

### FORESTRY TRAILER

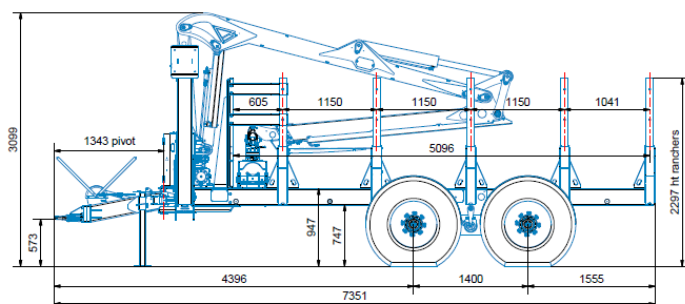
### XYLOTRAIL 18

*Forestry trailer and crane with increased capacities !*



**XYLOTRAIL 18** forestry trailer with 8 m **XYLOGRUE 8 PRO** crane

RABAUD expands its range of forestry trailers with a **new double beam model**, the **XYLOTRAIL 18**.



The XYLOTRAIL 18 has a gross vehicle weight rating (GVW) of **18 tons** and is road-approved at a speed of 25 km/h thanks to its hydraulic braking system on all four wheels. Its balance axle allows for an important wheel hop, greatly improving stability when moving over rough terrain.

## Press Release

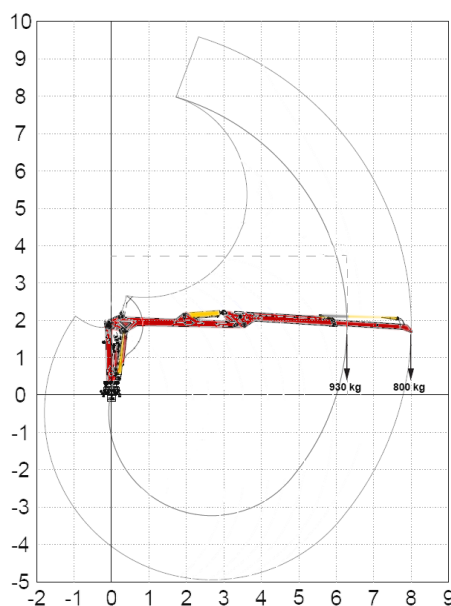


Designed to cope with the heavy demands of forest loading, the double beam chassis of the XYLOTRAIL 18 incorporates two central bars, providing excellent torsion resistance. Additionally, the 10 supports are directly welded to the chassis, ensuring increased robustness. These supports have been reshaped to lower the trailer's center of gravity, offering perfect stability and high ground clearance.

The protection grid of the XYLOTRAIL 18 allows secure storage of wood inside the trailer, ensuring the safety of the operator positioned at the rear.

The articulated drawbar equipped with two hydraulic cylinders offers a  $\pm 32^\circ$  orientation, providing great maneuverability and easier clearing in the woods.

Optionally, the XYLOTRAIL 18 offers hydraulic assistance on the wheels, allowing the trailer to be driven in the most rough areas. Additionally, forest profile or mixed profile wheels suitable for roads and fields can be mounted.



The other major feature of the XYLOTRAIL 18 is the new XYLOGRUE 8 PRO crane that equips it optionally. This 8-meter crane has a lifting capacity of 800 kg at the boom end. Equipped with 4 rotation cylinders, it offers flexibility of use. The crane controls can be customized according to the user's preferences with a choice between hydraulic controls, joysticks, or a remote control.



To ensure stability during crane operations, the XYLOTRAIL 18 is equipped with stabilizer stands with extra-wide feet offering optimal stability.

The XYLOTRAIL 18 trailers and forestry cranes are entirely manufactured in RABAUD's workshops in France. All cables - hydraulic, mechanical, and electrical - are routed through side members, providing increased resistance to shocks and UV rays for optimal durability over time.

*Digital photos available from the Communication Department at 00 33 251 48 51 43 or [marketing@rabaud.com](mailto:marketing@rabaud.com)*